



Product Data Sheet

TVD-1103

1.3 MPX HD Outdoor IR Dome Camera, 2.8 to 12mm, PAL

Overview

TruVision TVD-1103 is a HD IP Outdoor IR Dome camera designed to perform in a wide range of lighting conditions. Its built-in IR LEDs provide illumination up to 15 meters to ensure images – even in low light environments. The camera's Digital Wide Dynamic Range feature ensures that images are obtained, even in backlight scenes. The camera is compliant with the ONVIF and PSIA open standards.

Additional Features

Featuring an integrated browser and available micro SD card storage capabilities, TruVision IP cameras simplify remote live monitoring/playback of edge-recorded video and audio. Recording on the memory card also provides a level of redundancy in case of unforeseen network disruptions.

IP technology

TruVision cameras utilize H.264 compression with dual-streaming capability, making it easy to manage the camera's bandwidth usage. These cameras have been designed to adhere to PSIA and ONVIF open communication standards, and also support a CGI command set for simple integration into any IP system. Video streams can be set up for high and low bandwidth and images can be streamed for live viewing or sent to a designated recording location.



Standard Features

- IR Dome camera
- Real time HD 960p resolution
- Maximum resolution HD 960p
- H.264 with dual streaming functionality
- 1/3" CMOS Progressive Scan
- Motorized IR cut filter
- Digital Wide Dynamic Range
- 0 Lux (IR on)
- Up to 15m IR illumination
- 2.8 to 12mm lens
- Edge recording up to 64GB
- Designed to ONVIF and PSIA open standards

TVD-1103

1.3 MPX HD Outdoor IR Dome Camera, 2.8 to 12mm, PAL

Specifications

Camera		
Sensor Size:	1/3"	
SD / MPX:	1.3MPX	
Sensor scan:	Progressive Scan	
Sensor type:	CMOS	
IP Compression / Standard:	Main stream: H.264 H.264/MJPEG	Sub stream:
Available Resolutions:	Main stream: 1280x960, 1280x720, 704x576, 640x480 704x576, 352x288, 320x240	Sub stream:
Maximum Resolution (@ FPS):	1280 x 960 @25 fps	
Maximum Real Time Resolution:	1280 x 960	
HD 720p:	Yes	
Full HD 1080p:	No	
Digital S/N ratio:	50dB	
Electronic shutter:	1/25s to 1/100.000s	
Certification:	UL, CE, FCC, C-tick, REACH, RoHS, HALT, WEEE	

Lighting performance	
Wide Dynamic Range:	DWDR
WDR in dB:	72dB
Digital noise reduction:	3D DNR
Day/Night:	True Day/Night
Motorized IR Cut Filter:	Yes
Color sensitivity:	0.01 lux @ F1.2
B/W sensitivity:	0 Lux with IR
IR sensitivity:	0 Lux with IR
IR Range:	Up to 15m
IR Wavelength:	850nm
B/W trigger:	4.91lux
IR trigger:	4.91lux

Housing	
Camera type:	Dome
IP rating:	IP 66
Outdoor:	Yes
Rugged:	IK10 Rating

Lens	
Control type:	Vari Focal
Optical zoom:	No
Focal length:	2.8 to 12mm
F-stop:	1.4
Autoiris:	Yes
Varifocal:	Yes
Zoom lens:	No
Autofocus:	No

Power consumption	
Voltage Input:	12VDC \pm 10%
Current:	Max. 0.46A
Power Consumption:	Max. 5.5W
PoE:	PoE(802.3af)

Network	
ONVIF:	2.2
PSIA:	1.1
CGI:	Yes
Network Protocols:	TCP/IP, HTTP, DHCP, DNS, DDNS, RTP, RTSP, PPPoE, SMTP, NTP, UPnP, SNMP, HTTPS, FTP, 802.1x, Qos, IPv4/IPv6

Local Storage	
Media:	Built-in Micro SD/SDHC/SDXC card slot
Capacity:	64Gb

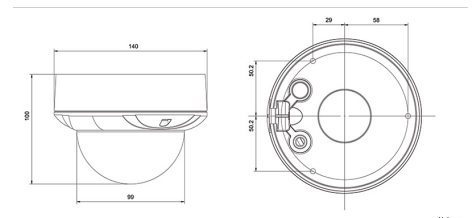
Audio G.711/G.726	
Input:	Wire for 1ch. audio interface (2.0 - 2.4 Vp-p, 1 kOhm)
Output:	Wire for 1ch. audio interface (Line level, 600 Ohm)

Camera Analytics	
Motion Detection:	Yes
Privacy Masking:	4

Alarm	
Alarm Input:	1

As a company of innovation, UTC Fire & Security reserves the right to change product specifications without notice. For the latest product specifications, visit [UTC Fire & Security online](#) or contact your sales representative.

Mechanical / Environmental	
IP66-IR-TVD-1103-2015-03-6 16:40:53	
Dimensions:	\varnothing 140 x 100 mm (\varnothing 5.5 x 3,9 in)
Weight:	767g (1.7lb)
Cold start Temperature	-20°C (-14°F)



UTC Fire & Security

A United Technologies Company