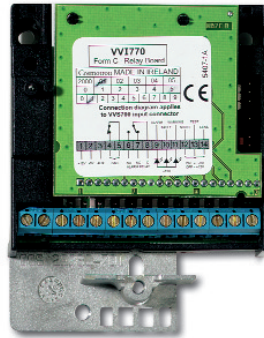




GE Interlogix

VV 700 Universal programmable seismic detector



- Universal seismic detector
- Digital signal processing
- Special configuration program SCM 700
- Programmable on site = 100% flexibility
- Easy programming from laptop
- Special analysing software for on-site performance measurements
- Compatible to all existing VV600 Plus accessories

Universal detector

The VV700 is a fully digital seismic detector using a micro-processor that gives 100% digital signal analysis. As the detector is programmed on site, it can be perfectly adapted to the environment and the application. With this new technology the detector allows for several different signal analysis programmes in the same hardware. This makes the VV700 a fully universal detector suitable for all known applications such as safes, vaults, vault doors, ATM's, Night Safe Deposit Boxes, weapon stores etc., without any compromises in detection ability.

Superior Detection

The seismic detector reacts to the characteristic vibration patterns of all breaking-and-entering tools, such as hammers, drills, diamond saws, hydraulic pressure tools and thermal tools like welding torch and thermal lance. It senses vibrations that occur with a 3 to 14 metre radius of where they are mounted, depending on the material and design of the protected object.

SCM 700 & VVI 740

The Seismic Configuration Manager 700 (SCM 700) is a Windows based software program for the programmable seismic detector VV700. The program is very easy to install on your laptop and will give you access to plenty of new and useful features such as background signal levels,

verification of the detector settings, analysing software for on-site performance measurements etc. By using the configuration program the installer can choose from five pre-determined detector modes.

Each program is tailored to a specific application. This will help you to make the most of the installation both in avoiding false alarms and having the highest performance when it comes to signal detection.

With the configuration cable VVI740 you can communicate with the VV700 detector directly from your laptop . A serial communication port (RS232) is required on your laptop.

The configuration cable VVI740 is the only tool that the installer need during the actual configuration of the detector and can be used on all his VV700 detector installations.

Plug-in boards & accessories

The VV700 features a plug in connection for all transponders designed in accordance with the draft standard IEC 839-2. In this way the transponder is integrated into the housing of the detector and is easily installed without any cabling or separate housing for the transponder. Available plug-in boards from Aritech are the Form A relay board VVI 760 and the Form C relay board VVI 770. A complete range of accessories is provided for all kinds of applications to achieve the highest security.

The **VV 700** protects any solid structure like safes, vaults, vault doors, ATM's and night safe deposit boxes.





GE Interlogix

VV 700 Universal programmable seismic detector

→ Technical Data

Operating data

Input power	9-15 V dc
Current consumption	Standby mode: 7 mA (excl. plug-in board) Active mode: 57 mA (excl. plug-in board)
Input / output	Depending on plug-in board
Sensitivity adjustment	5 steps of 6 dB each
Range	3 to 14 m radius depending on material See inst. manual for planning purposes
Sabotage protection	Drill shield, opening/pry-off contact, Low/high voltage Low/high temperature

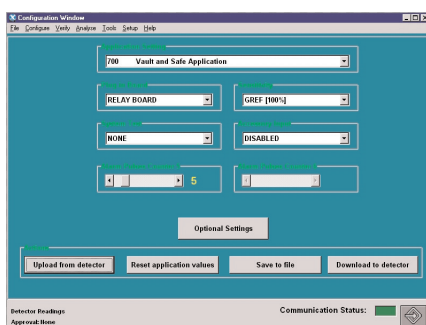
Environmental data

IP class	IP30 IK02
Operating temperature	-20°C to +55° C
Relative humidity	90% at +30° C

Physical data

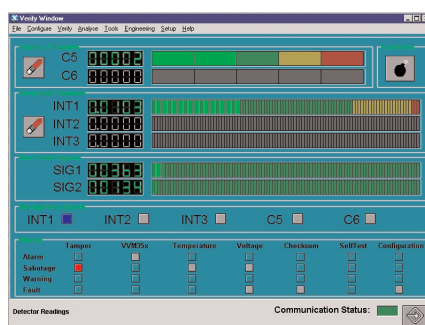
Dimensions	100 x 80 x 33 mm
Colour	Gray, RAL 7035
Weight	395g

→ SCM 700



Configuration window

By selecting a model in the <Application Setting> box you can perfectly adapt the VV700 to any application required. You can also change the sensitivity settings, test systems etc in this window.



Verify Windows

Any seismic activity will be displayed for all activated channels in the Verify Windows. Verify your installation by manual applied vibrations. The "Real time signal" bar shows the background signal level.

→ How to order

Detector & programming tools

VV 700	Universal programmable seismic detector
VV 700RA	Programmable detector incl. Form A relay board
VV 700RC	Programmable detector incl. Form C relay board
VVK 700	Configuration kit (configuration cable VVI740 & software program SCM 700)

Plug-in boards

VVI 760	Form A relay board
VVI 770	Form C relay board

Test system

VT 705P	Test transmitter
VT 610P	Hand held tester

Accessories

VM 600P	Mounting plate
VM 602P	Recess mounting box, wall
VM 603P	Weather protection box

VM 604P	Steel plate for tack welding
---------	------------------------------

VM 606P	Cable insert for round conduit
---------	--------------------------------

VM 607P	Cable insert for double conduit
---------	---------------------------------

VM 611P	Floor mounting box
---------	--------------------

VM 651P	Movable mounting kit
---------	----------------------

VM 652P	Key-hole protection kit
---------	-------------------------

VM 653P	5mm spacer for VM652P
---------	-----------------------

VM 654P	Armed cable kit
---------	-----------------

VM 655P	Tamper proof metal junction box
---------	---------------------------------

GE Interlogix UK

Unit 5, Ashton Gate,
Ashton Road, Harold Hill,
Romford, Essex RM3 8UF
Tel. 01708-381496
Fax 01708-381371

GE Interlogix Ireland

2007/2008 Orchard Avenue
City West Business Campus
Dublin 24
Tel. 01-469.97.60
Fax 01-469.97.61/2

GE Interlogix EMEA

Headquarters
Excelsiorlaan 28
B-1930 Zaventem
Tel. 02-725 11 20
Fax 02-721 40 47

Sales Offices : Austria, Baltic States, Belgium, Czech Republic, Denmark, Eastern Europe, France, Germany, Greece, Hungary, Ireland, Italy, Netherlands, Norway, Poland, Portugal, Slovak Republic, South Africa, Spain, Sweden, U.K.

LFVW700 03 Rev.1 0603/UK

CE Aritech reserves the right to change specifications without notice.
Aritech is a trademark of GE Interlogix B.V.