

Dome Mount Adaptor

CORNER MOUNT ADAPTOR

SADT-110CM



Features

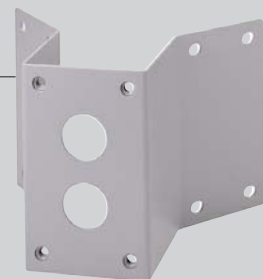
- ▶ This adaptor is used for the installation of the Wall Mount Adaptor(SADT-100WM) on the corner of a building or other structure.
- ▶ Indoor or Outdoor Applications
- ▶ Supports up to 97 Pounds(44Kg)
- ▶ Rugged Construction
- ▶ Can be used with SADT-100WM Wall Mount
- ▶ Steel body
- ▶ This product designed to use M10 anchor bolts or nuts
- ▶ Each anchor bolt must be capable of withstanding an extraction force of 1,540 Pounds(700Kg)

Video Security Systems

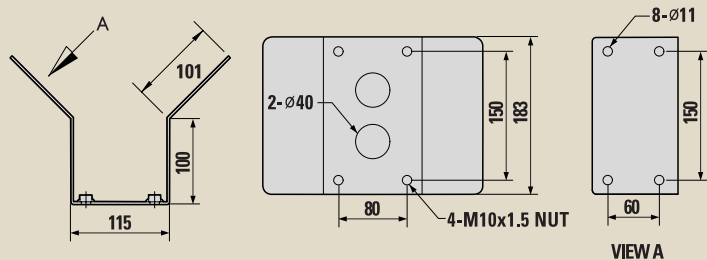
SADT-110CM

Specifications

Model	SADT-110CM
Operating Temperature	-40 ~ +50 °C
Operating Humidity	0 ~ 100%
Weight	2.1Kg
Dimensions	see Figure
Supply Accessory	- Stainless Bolt(M10XL30) 4EA - Spring Washer 4EA



Dimensions



Samsung Electronics Co., Ltd.

HPS Marketing Group

416, Maetan-3Dong, Paldal-Gu, Suwon City, Kyungki-Do, Korea 442-742
TEL : +82-31-200-9006 FAX : +82-31-200-5594
Internet Website : <http://www.securitysamsung.com>

Distributed by:

* Design and specifications are subject to change without notice.