



**WBJ** Die-cast aluminium bracket with sturdy joint, painted with epoxy powder RAL9002. It is suitable for medium and large extruded aluminium housings. The position adjustment is made only with one bolt.



**WBM** Medium-duty die-cast aluminium bracket with integrated joint, painted with epoxy powder RAL9002. It is particularly suitable for HEA, HEM, HEB, HET and HEK housings. The position adjustment is made only with one bolt.



**WBOV** Die-cast aluminium bracket with joint, painted with epoxy powder RAL9002. It offers vandal proof protection, thanks to the internal cable channel. It is suitable for HOV, HEC and HEK housings.



**WCM4** Ceiling mount with internal cable channel, made of curved aluminium tube and painted with epoxy powder RAL9002. It combines an easy position adjustment with vandal proof protection. Suitable for HOV, HEC housings.



**WCM5** Same features as WCM4 mount, but with cable channel exterior to the joint. Suitable for housings with external channel for power supply and video signal cables.



**WCMP** 500 mm linear extension for WCM4 and WCM5 mounts.



**WFWC** Aluminium column bracket with integrated joint, furnace painted with epoxy powder RAL9002; suitable for all aluminium housings.

CODE	HEG	HEP	HOV	HET	HEB	HEC	HEM	HEA	HEK
WBJ	•	•	•						
WBM				•	•		•	•	•
WBOV			•			•			•
WCM4			•			•			•
WCM5	•	•	•	•	•		•	•	•
WFWC	•	•	•	•	•		•	•	•
WBCA				•*					

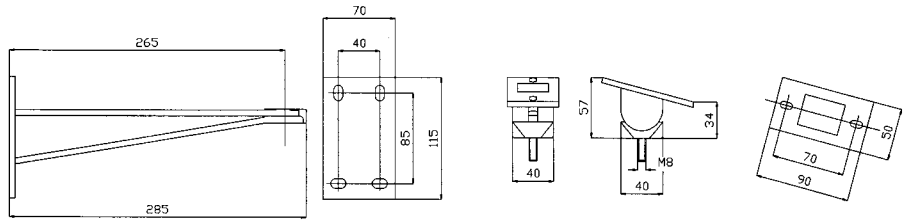
\*Only for 100 and 160 mm versions.

# TECHNICAL DOCUMENTATION

## WBJ

Bracket with integrated joint

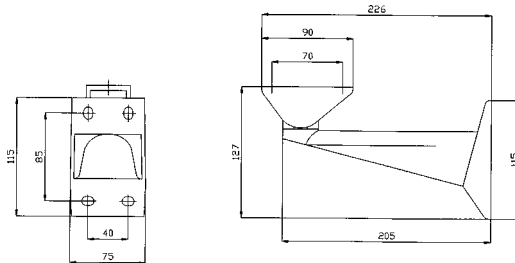
- wall installation
- external cable channel
- 25 Kg load rating
- 2 degrees of freedom
- weight: 0,6 Kg



## WBM

Bracket with integrated joint

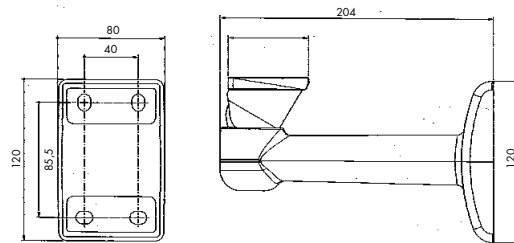
- wall installation
- external cable channel
- 25 Kg load rating
- 2 degrees of freedom
- weight: 0,5 Kg



## WBOV

Bracket with integrated joint and internal cable channel

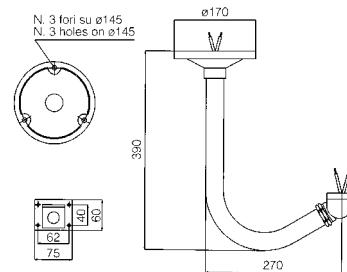
- wall installation
- internal cable channel
- 25 Kg load rating
- 2 degrees of freedom
- weight: 0,5 Kg



## WCM4

Mount with integrated joint and internal cable channel

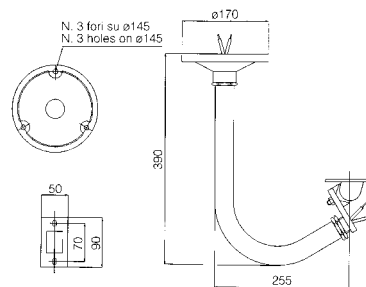
- ceiling installation
- internal cable channel
- 25 Kg load rating
- 2 degrees of freedom
- weight: 1,3 Kg



## WCM5

Mount with integrated joint and internal cable channel

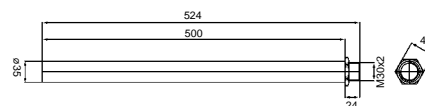
- ceiling installation
- internal cable channel
- 25 Kg load rating
- 2 degrees of freedom
- weight: 1,4 Kg



## WCMP

Extension

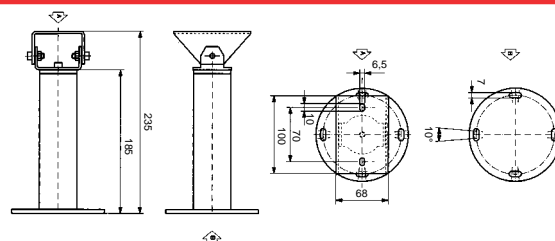
500 mm extension for WCM4 and WCM5



## WFWC

Column bracket

- column installation
- height: 185 mm
- 25 Kg load rating
- weight: 0,450 Kg





## WFWBT

Column bracket suitable for PTH900, PHH, PTH300 and PTH355P pan & tilt motors, made of aluminium and furnace painted with epoxy powder RAL9002. It can be used with PTBC, WFWC and PTAC brackets.



## PTAC

Wall mount for PTH300 and PTH355P pan & tilt motors, made of aluminium, painted with epoxy powder RAL9002. It is suitable for all adaptors for the mounting on any kind of surface.



## PTBC

Wall bracket for PTH900 and PHH pan & tilt motors. Made of die-cast aluminium and painted with epoxy powder RAL9002, it can be perfectly combined with PTCC pole adaptor.



## PTPC

Top of pole adaptor plate for PTH900, PHH, PTH300 and PTH355P pan & tilt motors. Made of 3mm-thick sheet steel and painted with epoxy powder RAL9002, it ensures a firm fixing of the pan & tilt motor.



## PTDC

Ceiling bracket for PTH900, PHH, PTH300 and PTH355P pan & tilt motors. Made of steel painted with epoxy powder RAL9002, it ensures a firm fixing of the pan & tilt motor.

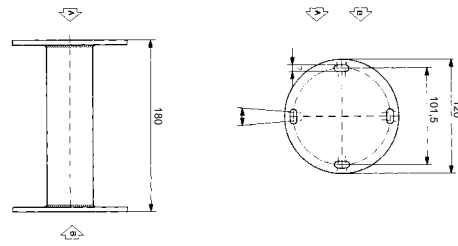
CODE	PTH300	PTH355P	PTH900-PHH
WFWBT	•	•	•
PTAC	•	•	
PTBC	•	•	•
PTPC	•	•	•
PTDC	•	•	•

# TECHNICAL DOCUMENTATION

## WFWBT

Column  
bracket

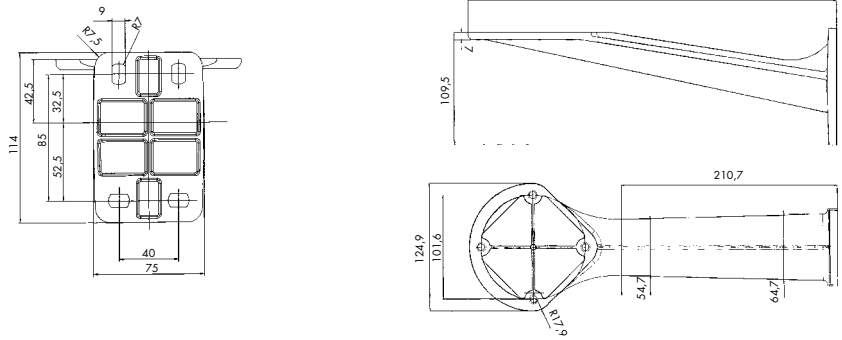
- column installation
- height 185 mm
- 50 Kg load rating
- weight: 0,4 Kg



## PTAC

Wall bracket

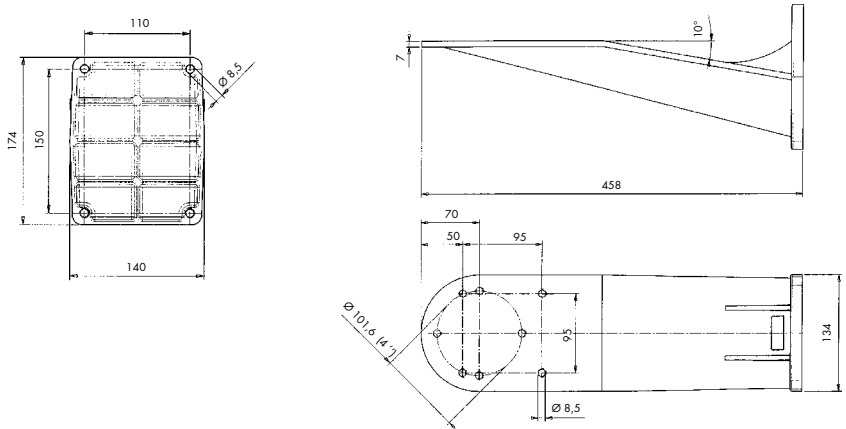
- wall installation
- length 360 mm
- 35 Kg load rating
- weight: 0,7 Kg



## PTBC

Wall bracket

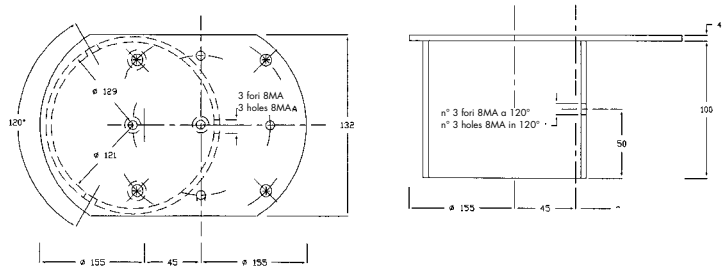
- wall installation
- length 458 mm
- 50 Kg load rating
- weight: 2,25 Kg



## PTPC

Top of pole  
adaptor plate

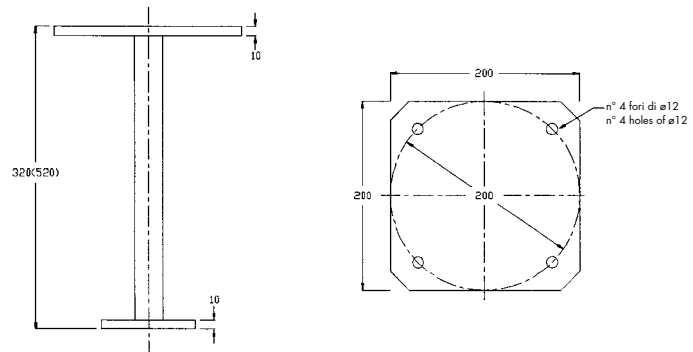
- top of pole installation
- length 335 mm
- pole:  $\varnothing$  80 - 120 mm
- weight: 1,9 Kg



## PTDC

Ceiling  
mount  
bracket

- ceiling installation
- length 325 mm
- 50 Kg load rating
- weight: 1 Kg





**PTCC** Pole mount adaptor for PTBC bracket. Made of thick die-cast aluminium and painted with epoxy powder RAL9002, it allows the pan & tilt / bracket couple to be firmly fixed to the pole.



**WSFP** Die-cast aluminium pole mount, painted with epoxy powder RAL9002, suitable for WBJ, PTAC, WBM, WBOV mounts.



**WCWGC** Corner adaptor for PTBC bracket. Made of aluminium painted with epoxy powder RAL9002.



**WCW** Corner adaptor for WBJ, PTAC, WBM, WBOV mounts. Made of aluminium painted with epoxy powder RAL9002.



**WCP** Die-cast aluminium reinforcing support plate, suitable for WBJ, PTAC, WBM, WBOV mounts. It allows the internal cable passing through a slot and a threaded hole placed at the side. Painted with epoxy powder RAL9002.



**WBOV3** Die-cast aluminium reinforcing support plate in weather-proof box, supplied with WBOV bracket. Combined with brackets with internal cable channel, it allows carrying out the wiring in the weatherproof box. Painted with epoxy powder RAL9002.

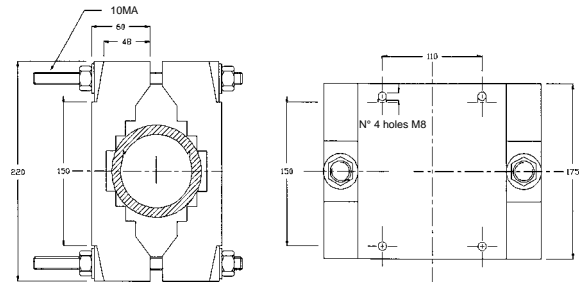
CODE	WBJ	WBM	WBOV	PTAC	PTBC
PTCC					•
WSFP	•	•	•	•	
WCWGC					•
WCW	•	•	•	•	
WCP	•	•	•	•	

# TECHNICAL DOCUMENTATION

## PTCC

Pole mount adaptor

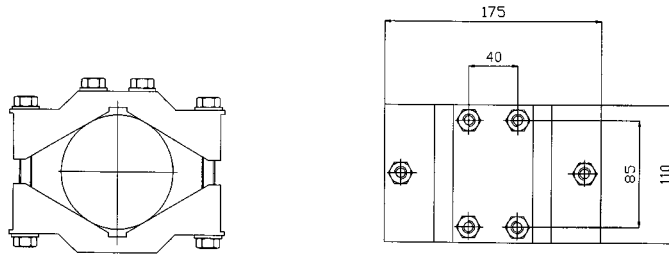
- pole installation
- dimensions: 220x175mm
- 50 Kg load rating
- pole: Ø 80 - 150 mm
- weight: 2,5 Kg



## WSFP

Die-cast pole mount

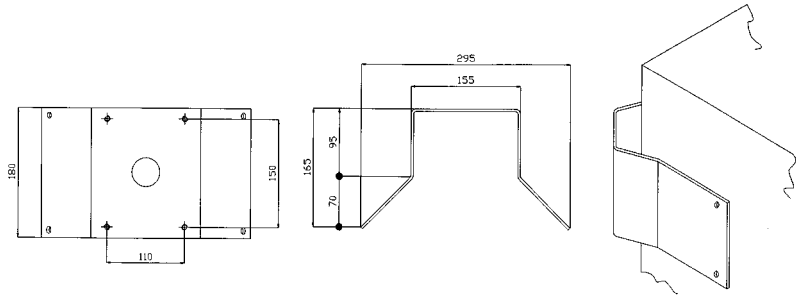
- pole installation
- dimensions: 110x175mm
- 50 Kg load rating
- pole: Ø 65 - 110 mm
- weight: 1 Kg



## WCWGC

Corner mount adaptor

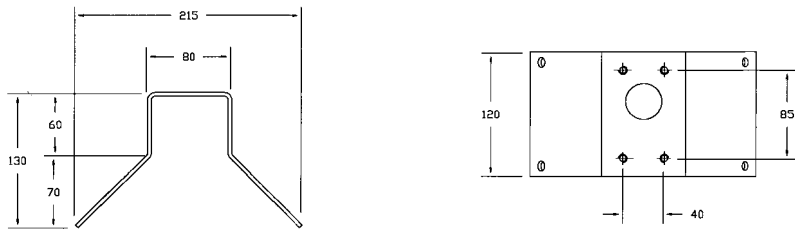
- corner installation
- dimensions: 295x180mm
- 50 Kg load rating
- weight: 2,20 Kg



## WCW

Corner mount adaptor

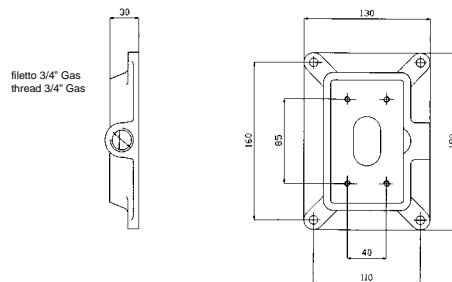
- corner installation
- dimensions: 215x120mm
- 30 Kg load rating
- weight: 1 Kg



## WCP

Reinforcing support plate

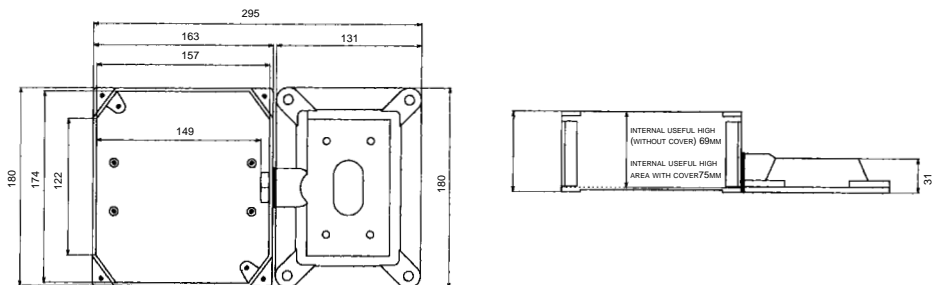
- wall installation
- dimensions: 130x180mm
- 50 Kg load rating
- weight: 0,6 Kg



## WBOV3

Reinforcing support plate in weather-proof box with bracket

- wall installation
- dimensions: 295x185x85 mm
- 15 Kg load rating
- weight: 2,4 Kg





**WBCA** Die-cast aluminium camera bracket with integrated joint, painted with epoxy powder RAL9002. The joint allows wide vertical and horizontal adjustment and is provided with 1/4" bolt for camera mounting. This bracket can be used for wall or ceiling installations and is suitable for all cameras and HET mini housing.



**WBCD** Mini aluminium bracket. The swivel and base are made of nylon. The ball joint allows wide adjustment and is locked by a M4 grub screw (the setscrew wrench is supplied). It can be used for wall or ceiling installations and is suitable for CCD cameras. The bracket is available curved or with different lengths: see the table for the corresponding codes. Painted with epoxy powder, it is available in RAL9002.

CODE	DESCRIPTION
<b>WBCD19</b>	190 mm - camera bracket
<b>WBCD14</b>	140 mm - camera bracket
<b>WBCD8</b>	80 mm - camera bracket
<b>WBCDM</b>	50 mm - camera bracket
<b>WBCDC</b>	Curved camera bracket
<b>WBCP</b>	50 mm extension



**WBCV** Mini bracket with integrated ball joint. The base and swivel are made of high impact nylon. The ball joint and the bracket are made of aluminium. It can be adjusted in position without tools. The same bracket can be used for ceiling or wall applications. Provided with 1/4" bolt, for camera mounting. Painted with epoxy powder, it is available in RAL9002.

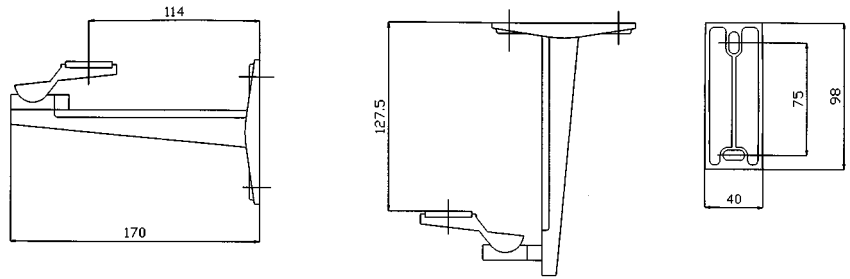
CODE	DESCRIPTION
<b>WBCV19</b>	190 mm - camera bracket
<b>WBCV14</b>	140 mm - camera bracket
<b>WBCV8</b>	80 mm - camera bracket
<b>WBCP</b>	50 mm extension

# TECHNICAL DOCUMENTATION

## WBCA

Die-cast aluminium camera bracket

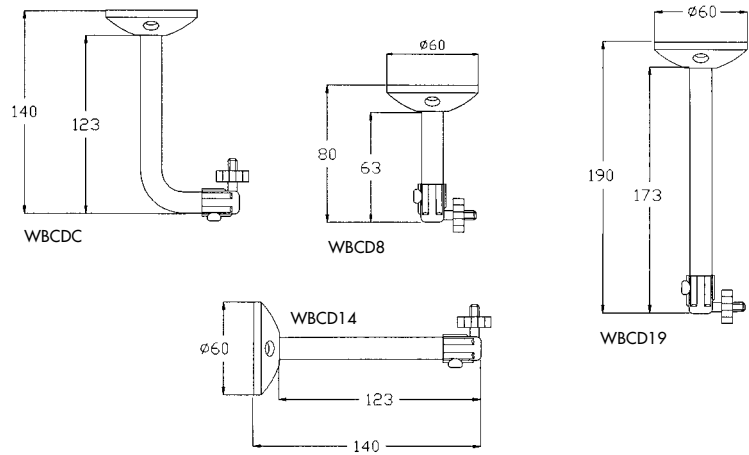
- wall/ceiling installation
- length 170 mm
- 5 Kg load rating
- 2 degrees of freedom
- weight: 200 g
- position adjustment by only one bolt



## WBCD

Die-cast aluminium camera bracket

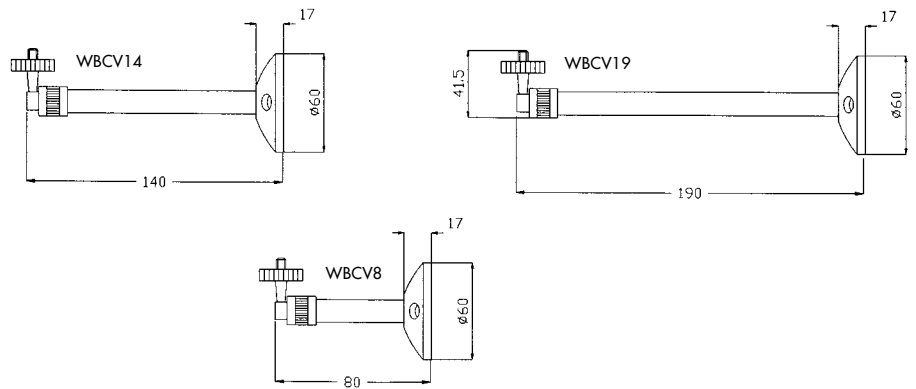
- wall/ceiling installation
- 2 degrees of freedom
- weight: 80 - 140 g
- ball joint locked by M4 grub screw



## WBCV

Die-cast aluminium camera bracket

- wall/ceiling installation
- 2 degrees of freedom
- weight: 80 - 140 g
- ball joint with ring lock



## WBCP

Extension

- 500 mm extension for WBCD and WBCV
- weight: 30 g

