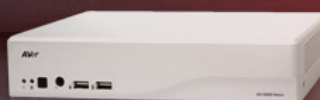


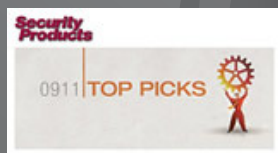


- **Embedded Linux**
- **Award-Winning GUI**
- **Hardware H.264 Compression**
- **Remote Video Management via iPhone, Android and Blackberry Devices**
- **2 Year Warranty**



Ultra-reliable 8-CH hybrid performance coupled with everything you need for local and mobile videosecurity management

Security Products Top Picks



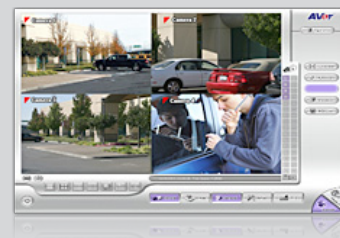
Join our Webinar!

AVer webinars are web based trainings presented by a trained AVer technical, marketing or sales specialist. The courses are designed for attendees to gain a deeper understanding of AVer products and solutions.



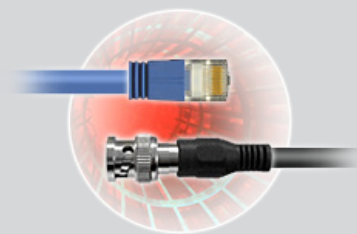
Ease-of-use Matters

The EH1008H has an embedded Linux base but behaves more like a PC-based DVR. Why? Because you still get AVer's award winning Graphical User Interface to manage it as opposed to a laborious menu driven structure. You get the ease of use along with the Linux "install it and forget about it" reliability.



Hybrid Integration Matters

If you already have analog cameras and want to add on a few IP cameras (up to 4), then the EH1008H is definitely your DVR. License-free IP channels, support for 50+ IP camera brands and ONVIF Compliance, this is a hybrid solution you really can work with. Check out our IP Camera Support list for a complete list of supported cameras.



Budget Matters

When you are installing in gas stations, convenience stores and small businesses, we know every penny counts. The EH1008H not only delivers a great price, but comes with better-than-standard features including full hybrid functionality, a robust Graphical User Interface and expanded remote management capabilities. User-friendly operation, low maintenance, essential surveillance functions and great value makes the EH1008H perfect for deployments in smaller facilities.

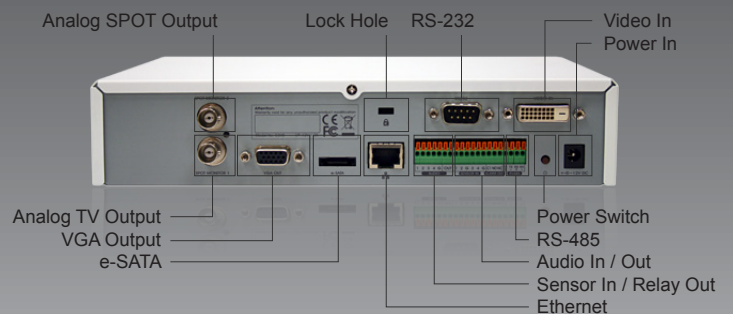
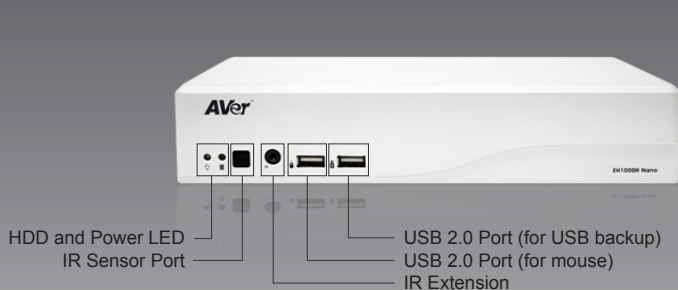


Contact Us:

Tel: 408.263.3828
Fax: 408.263.8132
inquiry.nvdusa@aver.com

Front Panel Connections					
Front panel controls	IR Extension Port				
USB 2.0 Ports	2				
Rear Panel Connections					
Video Inputs (analog)	8 - BNC connectors				
Video Inputs (IP)	4 video H.264/MPEG4/JPEG data streams				
Video Output	1 - VGA out, 2 - Spot Monitor Out				
Audio Input/Output	4/1				
Microphone Input	0				
Alarm Inputs/Relay Outputs	4/1				
E-SATA Port	1				
Communication	1x - RS232, 1x - RS485 for POS/PTZ				
AC Power	Power Button, Power Adapter (12V DC)				
Unit					
Operating system	Embedded Linux				
Compression (analog)	H.264				
Video Format	Analog	NTSC: 352x240 (CIF), 720x240 (Half-D1), 720x480 (D1)			
	IP	Up to 5 megapixels for one channel, and a total of 8 megapixels for all 4 IP camera channels in H.264/MPEG4/MJPEG format			
Recording Rates	Analog	Individually Adjustable (0 - 30fps)	CIF	Half-D1	D1
			240fps	120fps	60fps
	IP	FPS is over 4 channels at given MP resolutions		H.264	MJPEG
				1.3MP	100fps
			2MP	N/A	16fps
Storage	Capacity	Supports 1 Internal SATA HDD			
	eSATA	1 eSATA connector			
Communication Ports	RS 485	1, Terminal block, Tx+, Tx-, Rx+, Rx-			
	RS 232	1, 9 Pin, Male			
Networking		1x - 10/100 Base-T Ethernet, RJ-45			
Supported IP cameras (support IP PTZ, IP IO, & IP audio if IP cameras built-in)		AXIS, Panasonic, SONY, Arecont, Mobotix, BOSCH, IQinvision, JVC, TOSHIBA, VIVOTEK, ACTI, D-Link, PIXORD, PELCO, Apron, Lilin and more			
Operator Interface		USB mouse, USB PC keyboard, Remote controller (supports optional IR extension cable)			
Browser/Remote Client		MS Internet Explorer 6+, Windows 2000, XP, VISTA			
Mechanical					
Dimensions (H x W x D)		2.1 x 9.2 x 6.3in			
Weight		1.25 lbs (not including HDD)			
Regulatory					
Emissions		FCC: Part 15, Class A			

Software		
Interface	Graphical User Interface (world's first in Emb. Linux)	
Account Administration	Up to 32 accounts with configurable user privileges	
Camera Administration	Individually adjust analog camera fps/resolution	
PTZ Control	Zoom-in/Zoom-out, Focus-in/Focus-out, Direction, Speed, Preset point, Autopan	
De-interface options	Optimize for dynamic/static analog camera scenes	
Playback Administration	Playback while recording or setup	
	Play, rewind, fast-forward, frame-by-frame control	
	Digitally zoom to specific regions in recorded video	
	Export single frame to .jpg, export video clip to .DVR/.AVI/.MPEG	
Motion Detection	Configurable to sense mass/motion; can partition off areas in monitoring regions from motion triggers (Analog Cameras only)	
Event Recording	Scheduled, Continuous, Smart, Motion, Alarm, Manual	
Video Event Search	Date/time, camera, event & log files	
Advanced Event Log	Full event, operation, system & network activities log	
Alarm Notifications	Launch or send E-map, relay, video capture, CM3000 or E-mail notification	
E-map Display	Positions of cameras, sensors, relays & event status	
iEnhance	Enhance video quality such as Brightness/Contrast/ Hue/ Saturation/ Sharpness/ Noise Reduction/De-interlace/ Gray Scale of recorded video	
iStable	One-click fix for shaky video caused by camera movement (such as wind or vandalism)	
Remote Management		
Central Management	CM3000 software - supports up to 1000 DVRs	
Remote DVR connectivity	WebViewer (MS Internet Explorer only), Remote Console, JavaViewer, PDAViewer, iViewer(iPhone/iPad/iPod Touch/Android)	
Dispatch Server	Balance NVR communication for added client access and greater data transfer speeds	
DDNS	Free DDNS service allows access via host/domain name instead of IP address	
Environmental		
Temperature	Operating	32 ° to 104 °F
	Storage	-22°F to 140 °F
Relative humidity	Operating	50%-80%
	Stored	90%
Warranty		
2 Year Limited Parts and Labor		



NOTE: We highly recommend against using Samsung Hard Disk Drives for SA, XR and EXR DVR products.

SATA HDD (the below are recommended, but most SATA HDDs should work with a 3TB max)

Brand	Model	Capacity
Hitachi	HDT725050VLA360	500GB
	HDP725050GLA360	500GB
	HDT721010SLA360	1TB
	HUA722020ALA330	2TB
Seagate SV35.35	ST3500410SV	500GB
Seagate SV35.3	ST31000340SV	1TB
	ST31000525SV	1TB
Seagate SV35.2	ST3500630SV	500GB
	ST3750640SV	750GB
Seagate	ST32000542AS	2TB
	ST32000641AS	2TB
WD	WD3200AVVS-63L2B0	320GB
	WD7500AACS-00ZJB0	750GB
	WD10EADS-22L5B1	1TB
	WD20EARS-00S8B1	2TB
	WD2001FASS-00U0B	2TB
	WD30EZR	3TB

PTZ Camera (visit our website support/download page for a complete list)

Brand	Product Number
AmericanDynamics	UltraS - all products
Canon	VC-C4R
CD55	All products
DiGiDome	DRX -502A (DOH-240)
DMP23-H2	DMP23-H2
DynaColor	All products
Eastel	All products
ELMO	PTC -200C
Fastrax II	HID-2404
JVC	TK-C676 / TK-C675
Lilin	PIH 717X / 7000 / 7600 / PIH 7622/ 7622DH / 7635DH
MD101	All products
MicroJack-P	All products
NiceCam	All products
Panasonic	WV-CS850 / WV-CW860 / WV-CS950 / CS850B / CW860A / WV-CZ352
Pelco	Pelco-D/ Pelco-P
Philips	TC8560, TC700
Samsung	SCC-641
Sony	15-CZ45-1 /EVI-D70P
Yoko	All products

*Hardware recommendations are the minimum required hardware specifications for running our systems and not a guarantee to achieve the best performance of our DVR systems. Hardware specifications required to achieve the best performance of our DVR systems are subjected to different system settings and operation conditions.

Tel: 408.263.3828 Fax: 408.263.8132
Email: inquiry.nvusa@aver.com
www.averusa.com/surveillance

©2012 by AVer Information Inc. All rights reserved.
 No part of this document may be reproduced or transmitted in any form, or by any means without the prior written permission of AVer Information Inc. AVer Information Inc. reserves the rights to modify its models, including their characteristics, specifications, accessories and any other information stated herein without notice. The official printout of any information shall prevail should there be any discrepancy between the information contained herein and the information contained in that printout. "AVer" is a trademark owned by AVer Information Inc. Other trademarks used herein for description purpose only belong to each of their companies.

