

# Product Information

---

---

## DT596ID Series 2-Wire Outdoor Station

---

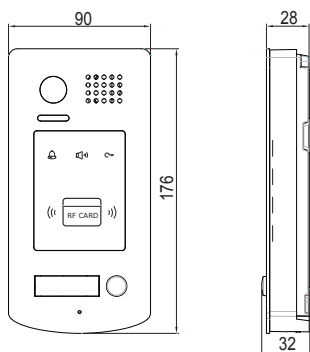


---

### DESCRIPTION

2-wire system color outdoor station with proximity ID card access control

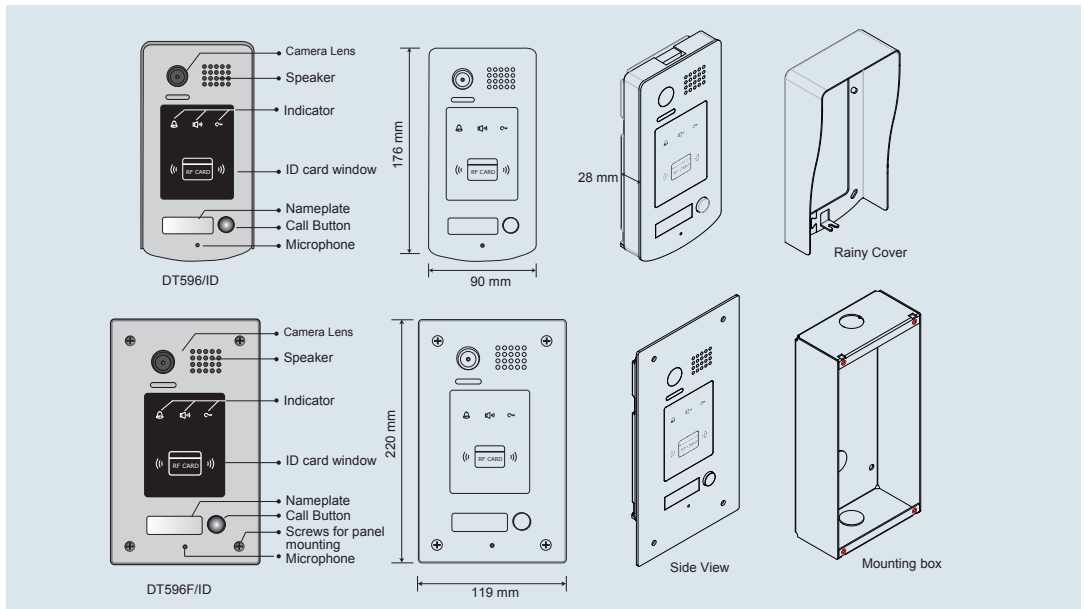
### DIMENSION



### FEATURES

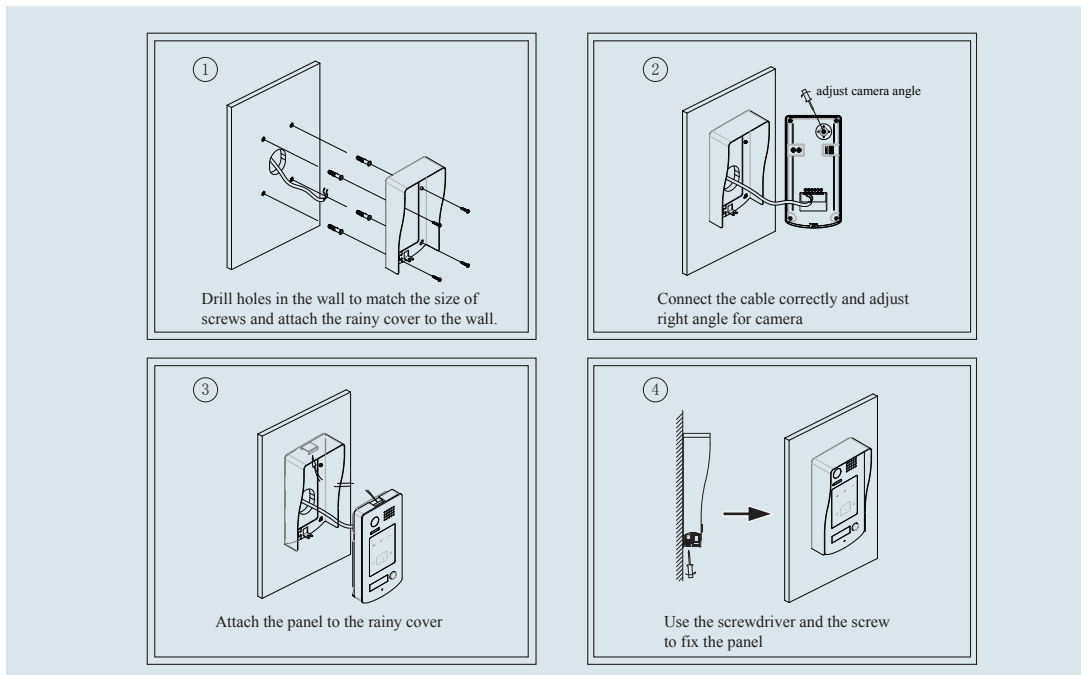
- ▶ Full stainless steel design with vandal proof function
  - ▶ 4mm plexiglass cover for protecting;
  - ▶ Proximity access control
  - ▶ Color CCD Camera with high resolution;
  - ▶ Name plate with background light;
  - ▶ Two locks control by separately through EM card;
  - 1\* Max.1000 EM cards for proximity;
  - ▶ Infra-red LED for night view;
  - ▶ IP55 protection rate;
  - ▶ Rainy cover for surface or full flush mounting by stainless steel panel;
  - ▶ Compatible with all DT two wire system models
-

# 1. Parts and Functions

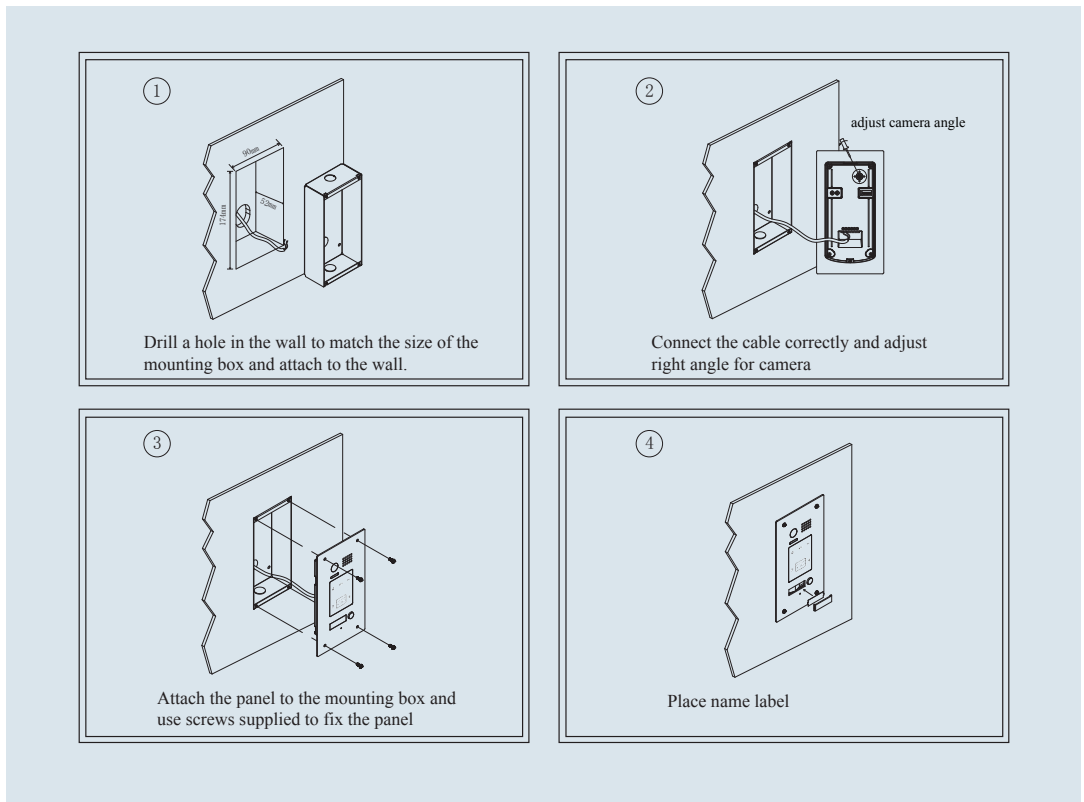


# 2. Door Station Mounting

## DT596F/ID Mounting



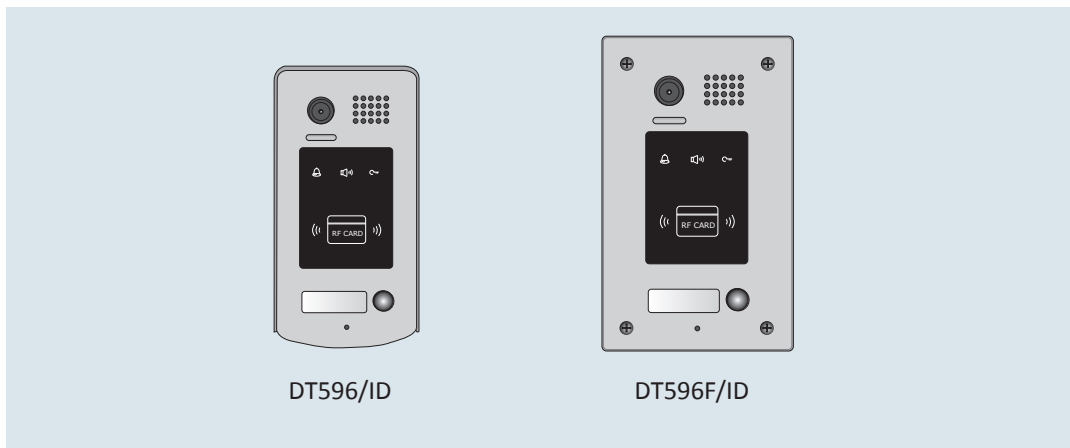
## DT596F/ID Mounting



### 3. Specification

- \* Power Supply : DC 24V (supplied by PS4-24V or PS5-24V);
- \* Power Consumption: Standby 60mA; Working status 200mA;
- \* Camera: Pinhole Sharp Color CCD; 420 TV Lines;
- \* Unlocking time: 1-99S, set by monitor or outdoor station;
- \* Talk Time: 90S;
- \* Lock Power supply: 12Vdc, 300mA(Internal Power);
- \* Temperature: -10°C~+45°C;
- \* Wiring: 2 wires (non-polarity);
- \* Dimension: 176(H)×90(W)×28(D)mm(DT596/ID)  
220(H)×119(W)×52(D)mm(DT596F/ID)

#### 4. Ordering Information for Door Station



Model No.	Brief Description	Remark
DT596/ID	Color CCD Outdoor Station with rain cover(Proximity Access version)	NSTC, PAL must be specified
DT596F/ID	Color CCD Outdoor Station by flush mounting(Proximity Access version)	NSTC, PAL must be specified

#### 5. Packing Information



Dimensions: 202(H)×100(W)×60(D)mm  
Gross Weight: 0.75Kg

Carton: 415 (H)×360 (W)×265 (D)mm  
Quantity: 28PCS