



## ATS1202

ATS Plug-in 8-zone expander

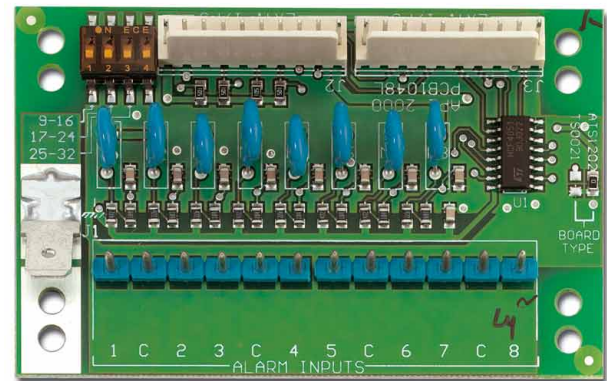
### Product Overview

Input expanders are devices for expanding the input capacity of an advisor MASTER panel or a DGP. Depending on the basic capacity of the panel up to 3 x ATS1202 input expanders can be used. The unit easily can be daisy chained.

### Expanding Features

A standard 8 zone DGP can have eight zones connected to it. This can be expanded in increments of 8, up to 32, using the ATS1202 8-Zone expanders (A DGP can have 8, 16, 24 or 32 zones).

A control panel can have 8 or 16 zones connected to it (depending on control panel type). There are sixteen zones allocated to every DGP address. This can be incremented to a maximum of 32 zones by fitting ATS1202 expander modules. If a DGP has 24 or 32 zones (two or three expanders fitted), the additional system zone numbers are taken from the following DGP address. If this is done, the next DGP address ceases to exist and is not included to be polled e.g. DGP 1 has 24 zones (zones 17 to 40). The next DGP in the system must now be addressed and polled as DGP 3, because zones 33 to 40 on DGP 1 have been taken from DGP 2.



### Standard Features

- The unit easily can be daisy chained
- Depending on the DGP or Panel 2 or 3 expander modules can be fitted
- A maximum of 32 zones can be expanded

# ATS1202

ATS Plug-in 8-zone expander

## Specifications

Power supply	10.5 - 13.8 VDC
	Powered by the panel or DGP
Current consumption	10 mA
Inputs	8
Siren output	No
OC outputs on board	None
Max. distance from panel	Located in Panel or DGP
Max. number per panel	2/3 and 3 per ATS1201
Specified cable	Supplied Flat Cable
Addressing	Individually, by DIP switches
PCB dimensions	80 x 52 mm
Housing dimensions (W x H x D)	No enclosure
Mains transformer	Not applicable
Operating temperature	0° to +50°C

## Ordering Information

Part No.	Description
ATS1202	Plug-in 8-zone expander for ATS1201,1203, 1204 or Control Panels



[www.gesecurity.net](http://www.gesecurity.net)